

## Basis of Adjacent Ways Cost – Hopi Elementary Rebuild

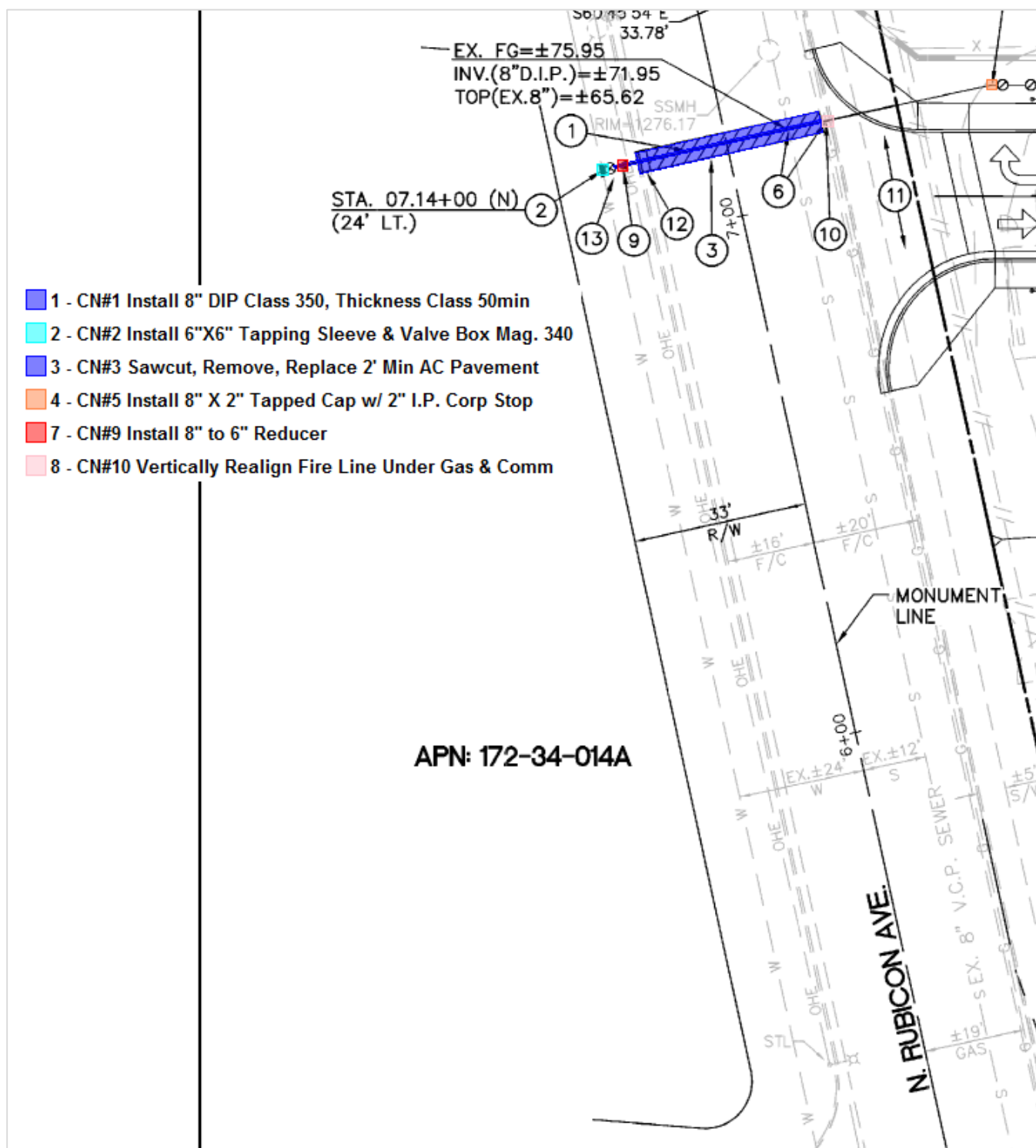
**Total** **\$985,944**

We have included this cost to cover the Bus and Fire equipment access lanes throughout the site as well as the offsite improvements in the public way adjacent to school property, highlighted below as directed by Hunt & Caraway Architects and Scottsdale USD. The scopes of work that fall within these boundaries are as follows: Survey & Staking, Earthwork & Paving, Offsite Utility connections, Offsite Street lights, Material Testing & Special Inspections, Signage & Striping, Fire Department Access Gates, Curbing adjacent to fire lanes and Site Concrete paving for fire lanes. CORE is not the defining authority for the scope of work classified as Adjacent Ways.



### Offsite Utility Connections:

## Fire Line Connection in Rubicon



**E. LAFAYETTE BLVD.**

**DOMESTIC WATER LINE**

**ON NOTES:**

- P.V.C. (SCHEDULE 40 WITH SOLVENT WELD) WATER LINE, INCLUDING ALL SCHEDULE 80 BENDS, ELBOWS AND THRUST BLOCKS.
- REDUCED PRESSURE BACKFLOW PREVENTION (CITY OF PHOENIX STANDARD DETAIL NO. 10-10-10)
- STALL COPPER TYPE "K" WATER LINE BETWEEN (1) AND (2) BACKFLOW PREVENTER.
- TO 2" REDUCER.

**LEGEND:**

- 41 - PI Domestic Water - Install 2" Domestic Water Service & Meter
- 127 - PI Off-Site Domestic Water - Install 4" PVC Water Line
- 128 - CN#9 Sawcut, Remove, Replace AC Pavement
- 129 - CN#8 Sawcut, Remove, Replace AC Pavement
- 130 - CN#10 Sawcut, Remove, Replace Concrete Sidewalk
- 131 - CN#11 Sawcut, Remove, Replace Vertical Curb & Gutter
- 132 - PI Off-Site Sanitary Sewer - Install 8" PVC Sewer Line

**STATIONING:**

STA. 2+09.14  
31.52' RT.

**MANHOLE DATA:**

ID	Type	Invert (NE)	Invert (SW)	Invert (NW)
7	EX. C.O.P. SSM #413	57.02	±56.35	±56.35



